

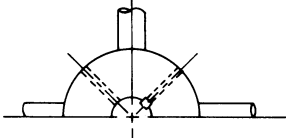
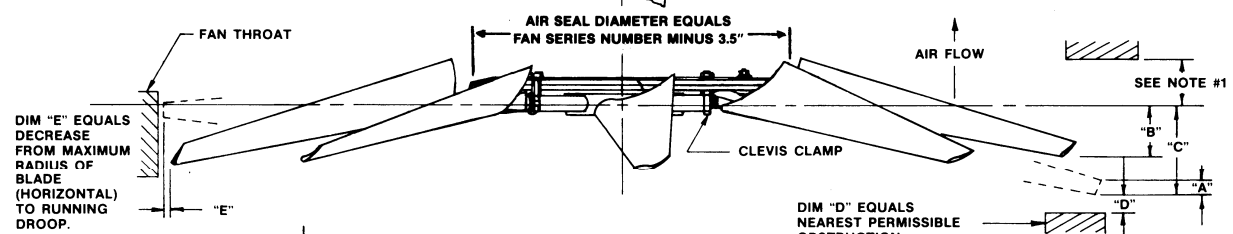
CLOCKWISE ROTATION (FAN BLOWING IN OBSERVER'S FACE) STANDARD RIGHT HAND BLADES.

DIM "A" EQUALS BLADE THICKNESS AT TIP AT 10° CLEVIS ANGLE

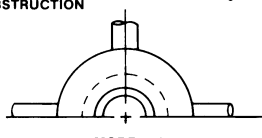
DIM "B" EQUALS RUNNING DROOP OF BLADES

DIM "C" EQUALS STOP DROOP OF BLADES

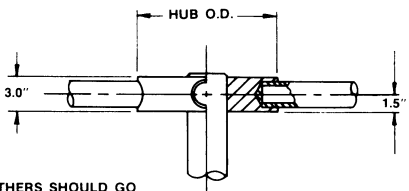
NOTE #1 FOR OBSTRUCTIONS NEARER THAN 12" ABOVE BLADE TUBE C₁ AT BLADE TIP, CONSULT FACTORY.



HUB O.D.	MAX. BORE	MAX. NO. BLADES
8.0"	3.00"	6
9.0"	4.00"	8
12.0"	5.50"	10



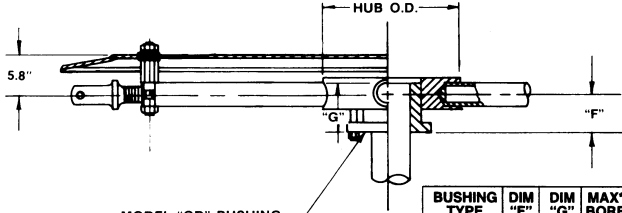
HUB O.D.	MAX. NO. BLADES	BUSHINGS AVAILABLE
8.0"	6	SF
9.0"	8	SF, E
12.0"	10	E, J



SHAFT BY OTHERS SHOULD GO COMPLETELY THROUGH HUB OR "QD" BUSHING

*MAXIMUM BORE DIMENSIONS ARE WITH U.S. STANDARD SQUARE KEY

**MAXIMUM BORE DIMENSIONS ARE WITH U.S. STANDARD SHALLOW KEYWAY



BUSHING TYPE	DIM "F"	DIM "G"	MAX. BORE	MAX. BORE
SF	2.5"	2.1"	2.313"	2.688"(80mm)
E	2.8"	2.7"	2.875"	3.50"(80mm)
J	3.2"	4.6"	3.750"	4.50"(100mm)

LETTER DIMENSIONS MAY VARY WITH BLADE ANGLE AND LOADING

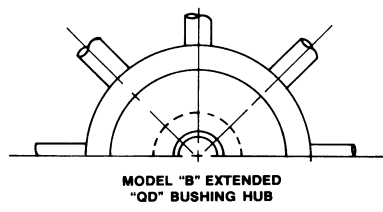
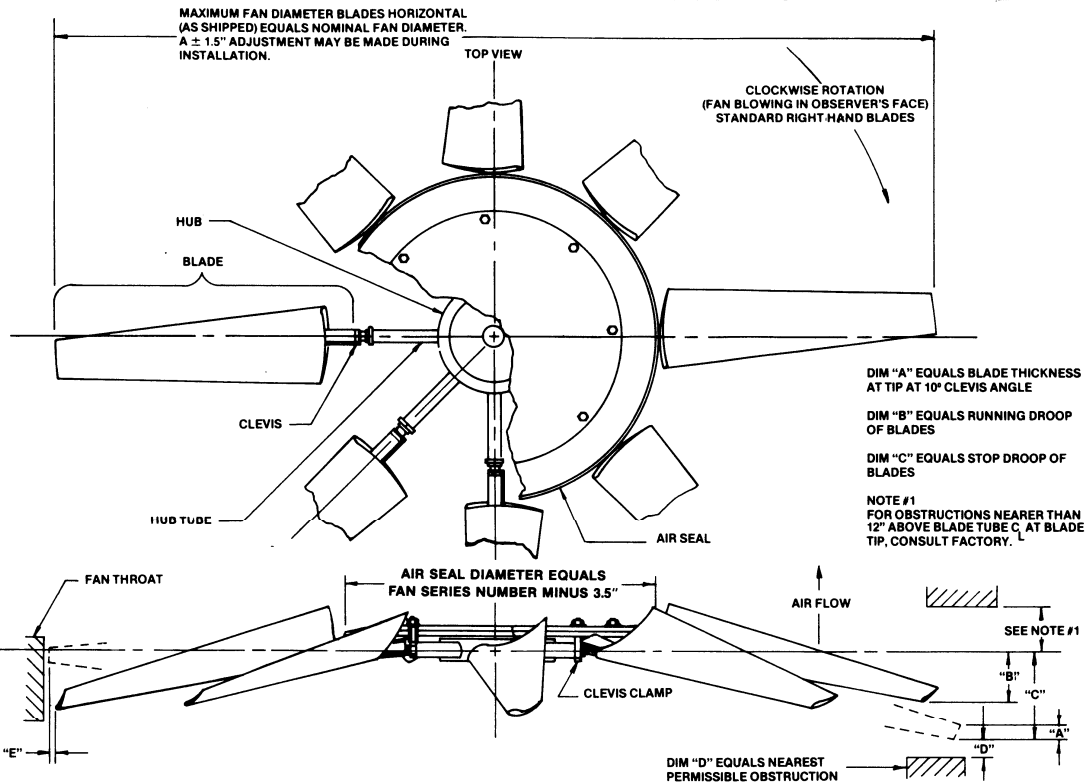
NOTES	WITH FAN OPERATING AT 12000 FT./MINUTE BLADE TIP SPEED						
	PERCENT OF BLADE LOAD						
	FAN DIA.	DIM A	DIM B		DIM C	DIM D	DIM E
			100%	75%			
	8'	4.0"	3.4"	2.9"	6.3"	1.9"	.20"
	9'	3.8"	4.1"	3.4"	7.4"	2.2"	.24"
	10'	3.4"	4.8"	3.9"	8.4"	2.5"	.29"
	11'	3.2"	5.6"	4.5"	9.5"	2.8"	.33"
	12'	2.7"	6.4"	5.1"	10.6"	3.2"	.39"
	13'	2.5"	7.2"	5.8"	11.6"	3.5"	.45"
	14'	2.3"	8.2"	6.5"	12.7"	3.8"	.52"
	15'	2.0"	9.2"	7.3"	13.8"	4.1"	.61"
	16'	1.7"	10.3"	8.2"	14.9"	4.5"	.71"

SERIES 49 PRESSURE BLOWER

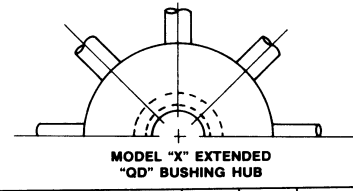


**ARRANGEMENT M
MANUAL ADJUSTMENT**

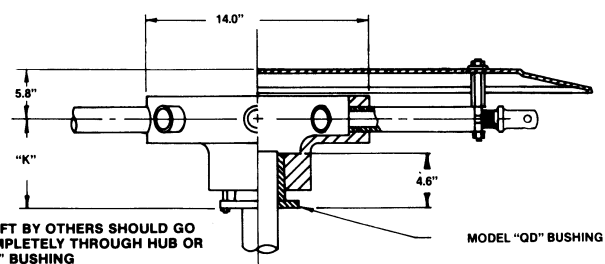
CLASS 5000



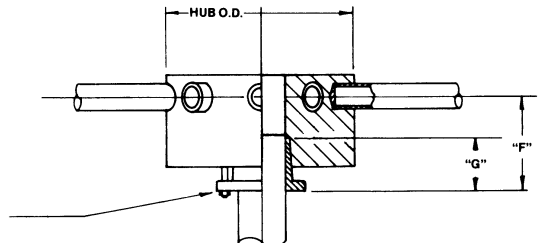
HUB O.D.	MAX* BORE	MAX. NO. BLADES	BUSHING	DIM "K"
14.0"	3.750"	10	J	8.0" or 12.0"



HUB O.D.	MAX. NO. BLADES	BUSHING	DIM. "F"	DIM. "G"	MAX* BORE	MAX** BORE
8.0"	6	SF	5.3"	2.1"	2.313	2.568" (66 mm)
8.0"	6	E	5.5"	2.7"	2.875	3.50" (89 mm)
9.0"	8	E	5.5"	2.7"	2.875	3.50" (89 mm)



SHAFT BY OTHERS SHOULD GO COMPLETELY THROUGH HUB OR "QD" BUSHING
 *MAXIMUM BORE DIMENSIONS ARE WITH U.S. STANDARD SQUARE KEY
 **MAXIMUM BORE DIMENSIONS ARE WITH U.S. STANDARD SHALLOW KEYWAY



LETTER DIMENSIONS MAY VARY WITH BLADE ANGLE AND LOADING

NOTES	WITH FAN OPERATING AT 12000 FT./MINUTE BLADE TIP SPEED						
	FAN DIA.	DIM A	PERCENT OF BLADE LOAD		DIM C	DIM D	DIM E
			100%	75%			
	8'	4.0"	3.4"	2.9"	6.3"	1.9"	.20"
	9'	3.8"	4.1"	3.4"	7.4"	2.2"	.24"
	10'	3.4"	4.8"	3.9"	8.4"	2.5"	.29"
	11'	3.2"	5.6"	4.5"	9.5"	2.8"	.33"
	12'	2.7"	6.4"	5.1"	10.6"	3.2"	.39"
	13'	2.5"	7.2"	5.8"	11.6"	3.5"	.45"
	14'	2.3"	8.2"	6.5"	12.7"	3.8"	.52"
	15'	2.0"	9.2"	7.3"	13.8"	4.1"	.61"
	16'	1.7"	10.3"	8.2"	14.9"	4.5"	.71"

SERIES 49 PRESSURE BLOWER



ARRANGEMENT M
 MANUAL ADJUSTMENT

CLASS 5000